

All prices are list prices for local market, for a quotation please contact us.

### GT price list

H/L	200	300	400	500	600
100	28	32	37	42	47
150	33	41	46	52	56
200	37	47	52	58	65
300	-	57	65	77	83
400	-	-	104	123	144

### GRF price list

H/L	200	400	600	800	1000
200	49	54	63	72	85
300	52	56	69	82	94
400	54	64	84	94	110
500	60	74	92	108	125
600	63	84	102	122	140
560x560	600X600 panel				102

### Description

- GT:** transfer grilles with  $\Lambda$  blades, light shield profile
- including adjustable counterframe
  - made of natural anodised aluminium
  - fastening with visible screws (not included)

- GRF:** return grille with perforated panel
- fastening with snap-on clips
  - made of galvanised steel with RAL 9010 finish
  - fastening with clips

### Accessories

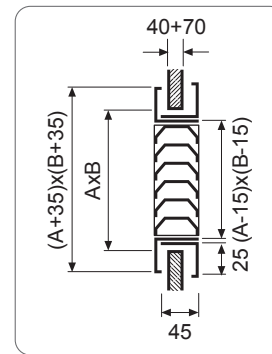
- SC:** control damper (GRF only) - (SC page 30 +20%)  
**CT:** counterframe  
**PL/PT:** plenum

### Special versions

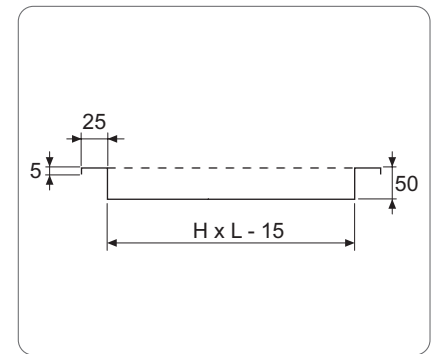
- GRF - FV:** fastening with visible screws  
**GRF-X:** made of 304/316 stainless steel  
**GRF - A:** made of anodised aluminium  
**VR:** coating according to RAL 9005 / 9006 table  
 fixed surcharge €30 + 20% per piece

Other RAL colours on request

### GT



### GRF



### GT selection table

AK (dm <sup>2</sup> )	L x H (mm)	Flow rate (m <sup>3</sup> /h)																					
		50		60		100		150		200		300		400		500		600		800		1000	
1.0	200x100	15		22																			
		1.4	9	1.9	17																		
1.6	300x100	-		15		23																	
		0.9	3.5	1.2	7	1.7	14																
2.4	300x150	-		-		18		25															
		0.6	1.5	0.8	3	1.2	6	1.7	14														
3.3	400x150			-		-		20		26													
				0.6	1.5	0.8	3	1.3	7	1.7	13												
5.6	400x200					-		-		18		25		31									
						0.5	1.1	0.7	2.5	1.0	4.5	1.5	10	2.0	18								
7.0	300x300 500x200							-		-		22		27		32							
				0.6	1.6	0.8	3	1.2	6.5	1.6	11	2.0	18										
9.0	400x300									-		16		23		27		32					
				0.6	1.7	0.9	4	1.2	7	1.5	11	1.9	15										
12.0	500x300									-		20		23		27		33					
				0.7	2	0.9	4	1.2	6	1.4	9	1.9	15										
19.0	600x400	NR								-		15		20		25		30					
		Vk	$\Delta$ pt			0.6	1.5	0.7	2.5	0.9	3.5	1.1	6.0	1.5	10								

The NR values do not take into account room attenuation  
**GRF:** GT data x 0.7