

QAD



Description

- QAD:** ducted axial fan compact unit
- steel casing with RAL 7032 epoxy coating
 - hub in cast aluminium
 - impeller with adjustable angle of incidence, dynamically balanced glass fibre reinforced technopolymer blades
 - IP 55 motors with thermal protector
 - IP 55 external junction box
 - operating temperature -20°C / +70°C

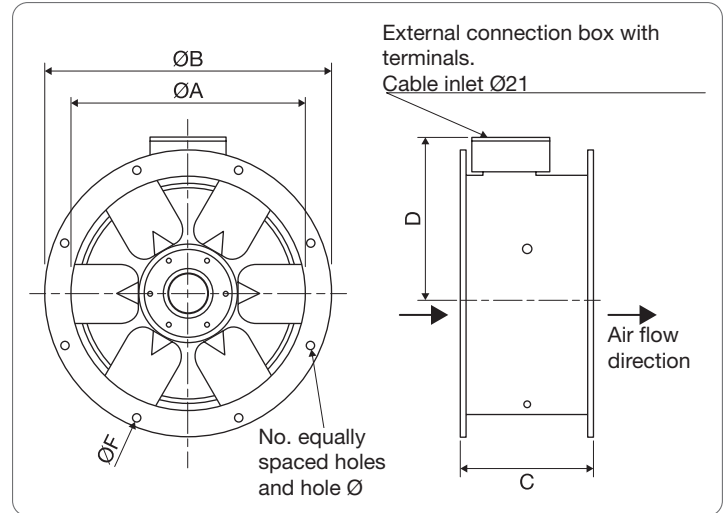
Accessories

- foot
- anti-vibration supports (4 pieces)
- flexible anti-vibration joint
- mesh on impeller side
- sound attenuators (see Acoustics section, page 1)
- inverter

Special executions

- casing in AISI 304/316 stainless steel
- ATEX execution
- other executions on request

Dimensions



GR	Ø A	Ø B	C	D	E	Ø F	Weight (Kg)
315	315	382	180	207	8	9.5	8
350	350	421	180	224	8	9.5	8
450	450	515	190	274	12	9.5	14
500	500	567	250	300	12	9.5	21
560	560	636	250	330	16	11.5	23
630	630	709	250	365	16	11.5	30

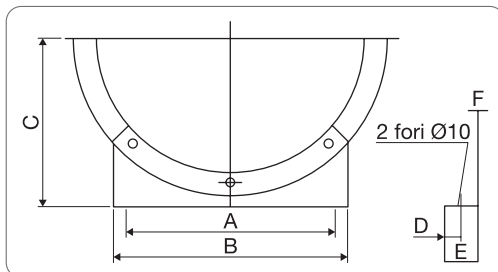
Selection table and price list

Three-phase - 1400 rpm

All prices are list prices for local market, for a quotation please contact us.

GR	kW	Amp.	Eff. %	Static pressure (Pa)												Noise in dBA at 3 metres		€	
				0	10	20	40	60	80	100	120	140	160	180	IN	OUT			
				Flow rate (m³/h)															
315	0.12	0.42	15.90	2100	2010	1920	1680	-	-	-	-	-	-	-	-	-	52	51	529
350	0.12	0.42	26.20	2240	2160	2100	1950	1750	1460	-	-	-	-	-	-	-	52	52	534
450	0.25	0.68	38.80	5450	5350	5250	4900	4750	4350	4100	3500	-	-	-	-	-	60	59	646
500	0.55	1.35	38.50	7720	7550	7490	7200	6800	6400	6100	5620	4870	-	-	-	-	59	60	771
560	0.75	1.90	42.30	10400	10250	10100	9700	9200	8750	8500	8000	7500	7000	6000	-	-	61	61	857
630	1.10	2.70	40.90	15300	15100	14900	14300	13850	13300	12650	12100	11400	10750	-	-	-	65	66	949

Accessories

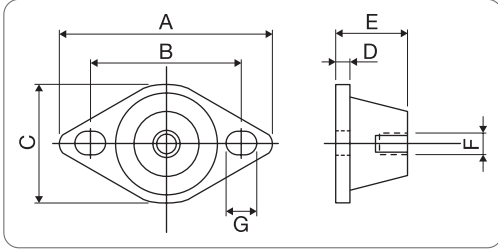


Size	A	B	C	D	E	F	Weight (Kg)
315	250	280	200	20	40	2	1
350	280	310	225	20	40	2	1.3
450	240	275	275	20	40	2	2
500	280	315	315	25	50	2.5	2.5
560	320	355	355	25	50	2.5	4
630	360	400	400	25	50	2.5	5

Dimensions in mm

FOOT: made of steel with RAL 7032 beige powder coating to attach to the fan flange for anchoring.

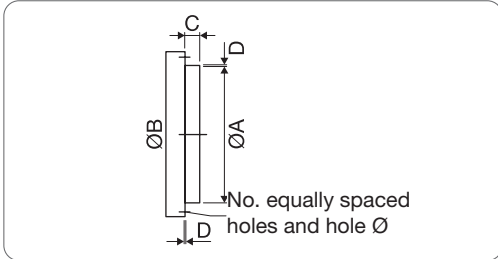
Accessories



Size	DN	A	B	C	D	E	F	G	Weight (Kg)
ES 62 1	315-450	64	50	43	5.5	20	M6	Ø 7	0.04
ES 62 2	500-630								

Dimensions in mm

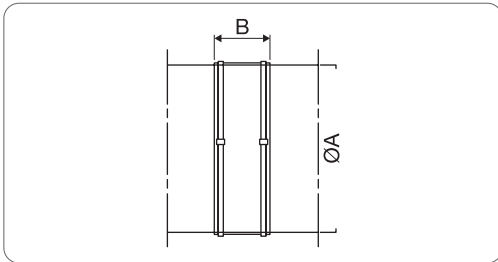
ANTI-VIBRATION SUPPORTS: kit of 4 pieces, made of rubber with metal insert.



Size	Ø A	Ø B	C	D	E	Ø F	Weight (Kg)
315	315	382	30	1.6	8	9.5	0.7
350	350	421	30	1.6	8	9.5	1
450	450	515	40	1.6	12	9.5	2.2
500	500	567	45	1.6	12	9.5	2.6
560	560	636	45	1.6	16	11.5	3
630	630	709	45	1.6	16	11.5	3.5

Dimensions in mm

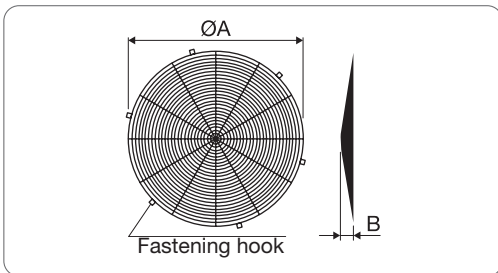
FLANGES: flanges for connection to the duct or to flexible joints, made of RAL 7032 beige powder-coated steel.



Size	Ø A	B	Weight (Kg)
315	315	150	0.6
350	350	150	0.7
450	450	150	1.1
500	500	150	1.2
560	560	150	1.3
630	630	200	1.4

Dimensions in mm

FLEXIBLE ANTI-VIBRATION JOINT: made of PVC-coated polyester with steel fastening bands.



Size	Ø A	B	Weight (Kg)
315	335	21	1.1
350	370	23	1.4
450	470	29	1.8
500	520	32	2.2
560	585	32	2.5
630	655	40	2.6

Dimensions in mm

MESH ON IMPELLER SIDE: for protection, made of RAL 7040 grey painted steel.

Price list

All prices are list prices for local market, for a quotation please contact us.

Size	Price list €				
	Pair of feet	Flange	Flexible anti-vibration feet	Mesh on impeller side	Anti-vibration supports (Kit of 4)
315	98	49	27	19	164
350	106	53	27	19	164
450	126	63	32	26	164
500	136	68	34	27	164
560	170	85	37	32	164
630	200	100	39	43	164